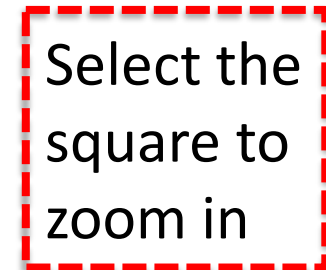


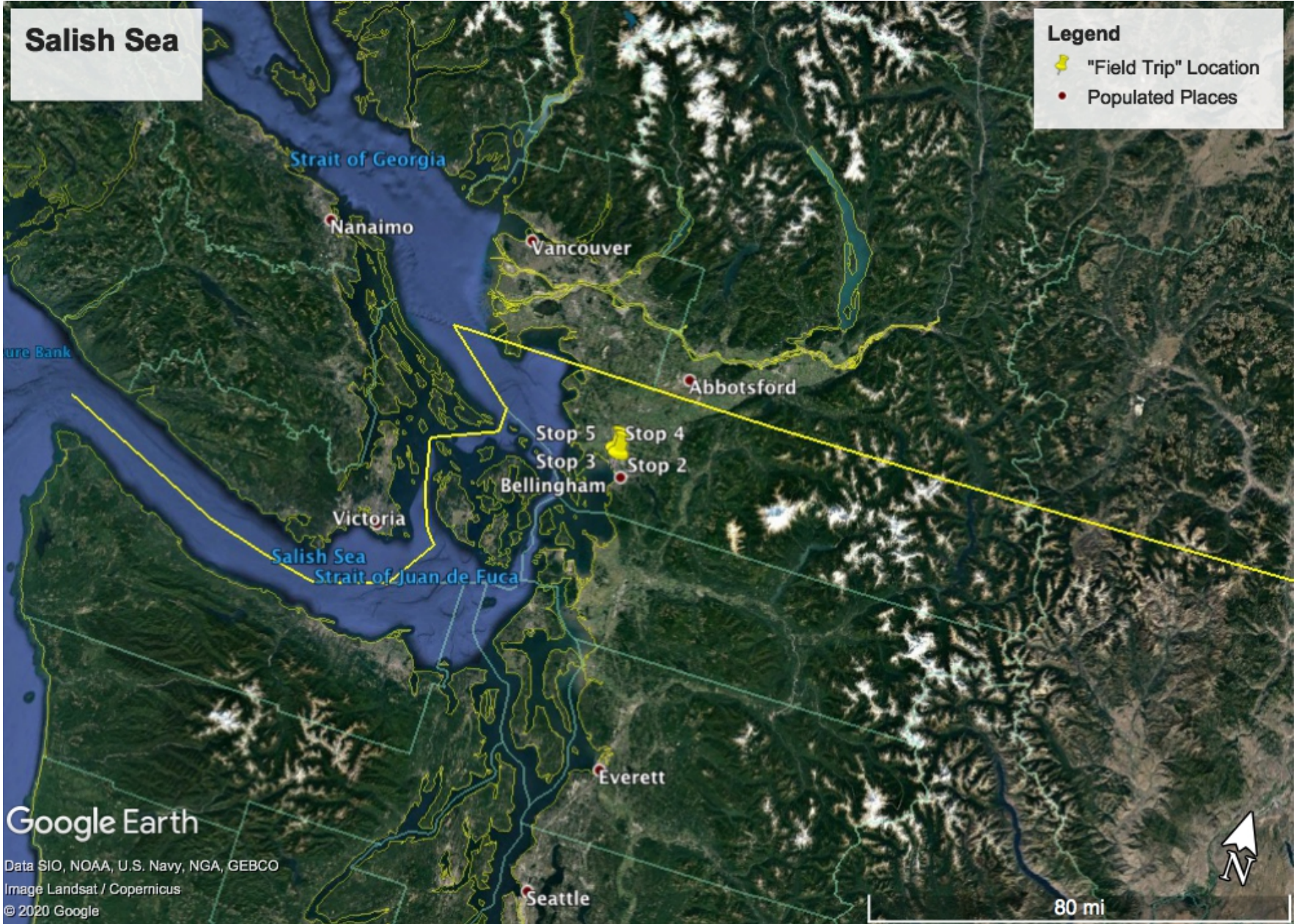
Shorelines of Bellingham Bay

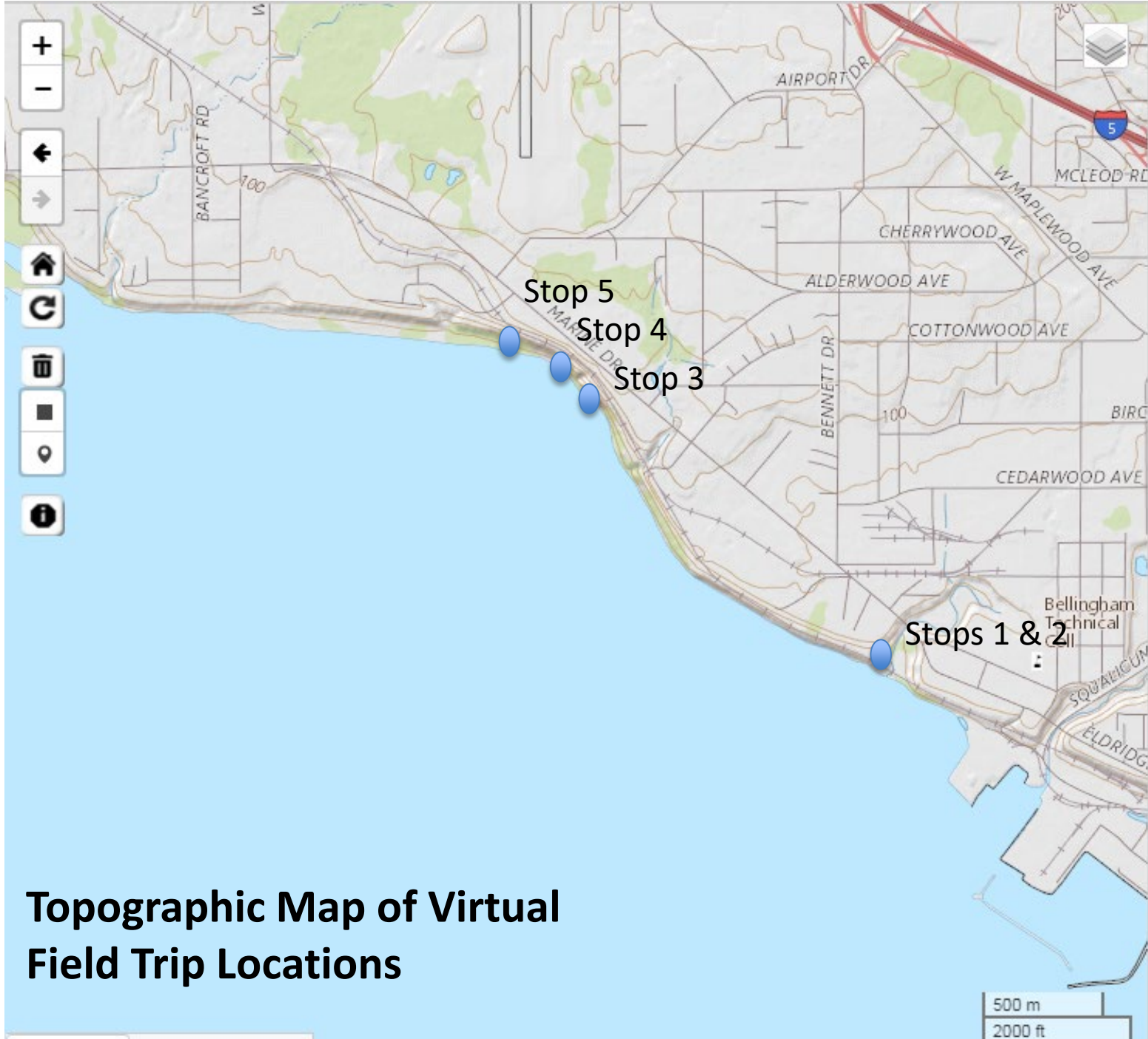
How to go “on” the field trip:

- Click on red boxes to zoom into specific field stops
- Yellow signs indicate current location
- Click on the globe to return to the base map showing the different stops
- Click on arrows to rotate views at a stop



Salish Sea with Virtual Field Trip Stop locations






Topographic Map of Virtual Field Trip Locations

Bellingham Bay

Stops of interest for a Virtual Field Trip

Virtual Field Trip Base Map

Legend

 Stop

Stop 5
Stop 4
Stop 3



Continue field trip here!



Stop 2
Stop 1




Locust Beach

Stops 3-5 for Virtual Field Trip

Stops 3-5 Base Map

Legend

 Stop

Stop 5

Stop 4

Stop



Google Earth

© 2020 Google



600 ft

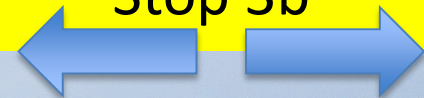
Stop 3a



Stop 3a-1



Stop 3b



Stop 3b-1



Stop 3b-1a



Stop 3b-2



Stop 3c



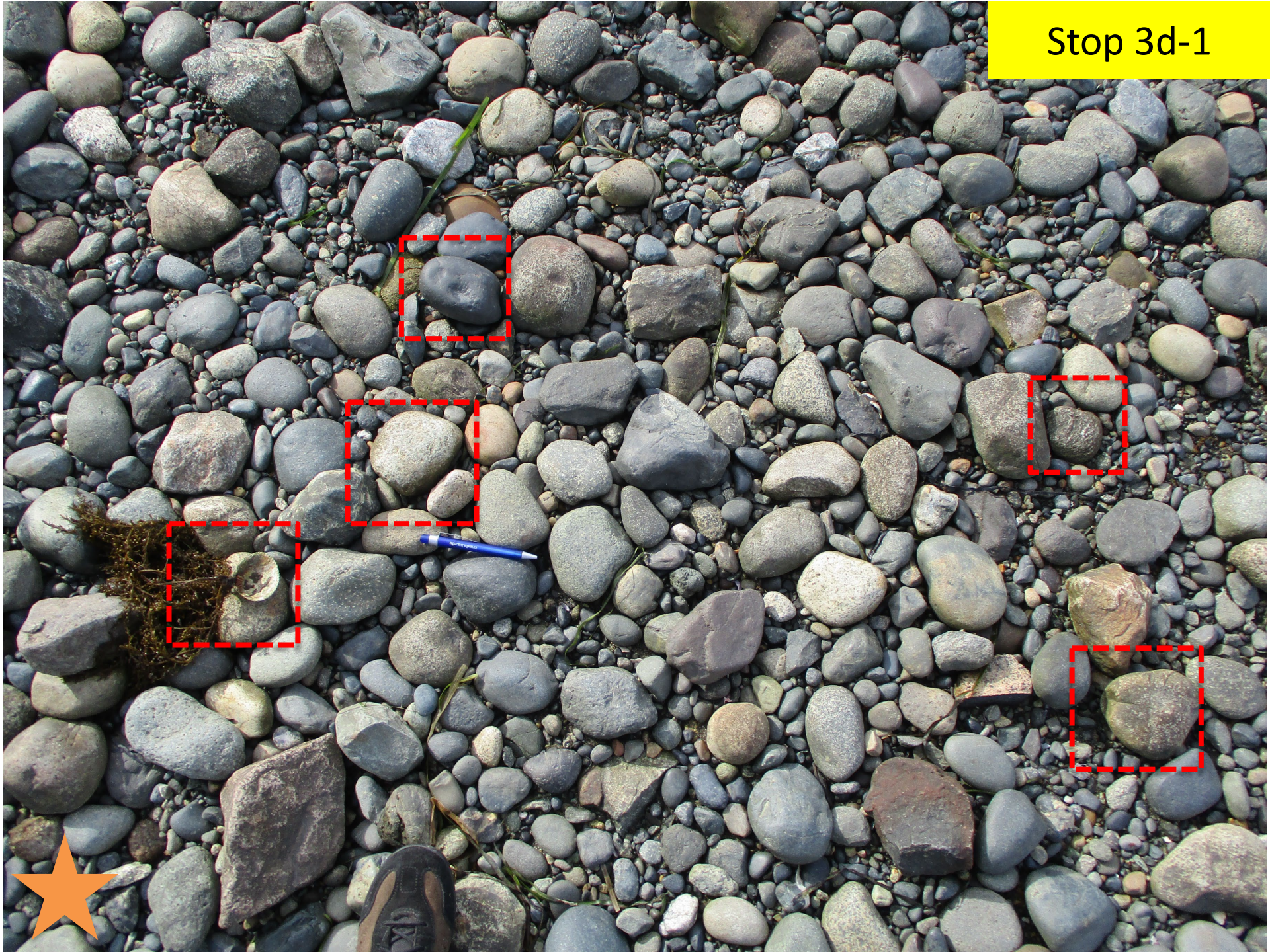
Stop 3c-1



Stop 3d



Stop 3d-1



Stop 3d-1a



Stop 3d-1b



Stop 3d-1c



Stop 3d-1d



Stop 3d-1e



Stop 3e



Stop 3e-1



Stop 3f



Stop 3f-1



Stop 3f-1a

